

FACT FILES
Nocturnal
Animals



FACT FILES
Nocturnal
Animals



FACT FILES
Nocturnal
Animals



FACT FILES
Nocturnal
Animals



FACT FILES
Nocturnal
Animals



FACT FILES
Nocturnal
Animals



FACT FILES
Nocturnal
Animals



FACT FILES
Nocturnal
Animals



Tawny Owl



Description: Round head, flat face with large dark eyes. About the size of a pigeon.

Habitat: Woodland, shrub land, parks and gardens

Diet: Carnivorous - mice, voles, small birds, frogs, large insects and earthworms

Fox



Description: Reddish brown fur, white chest and a bushy white tipped tail or 'brush'.

Habitat: Hedges, meadow/ woodland areas and sheds.

Diet: Carnivorous - small mammals/birds, insects, earthworms, fruit and berries.

Hedgehog

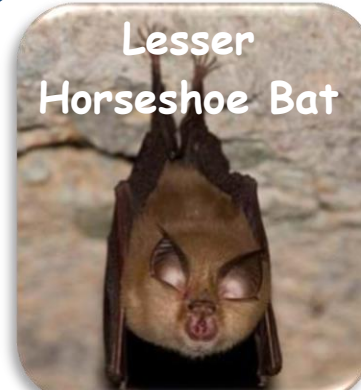


Description: Short legs, round body covered in short dark yellow tipped spines.

Habitat: Hedgerows, woodland, meadows and gardens.

Diet: Omnivorous - garden grubs such as insects and snails. Also frogs, snake eggs and carrion.

Lesser Horseshoe Bat



Description: A horseshoe shape flap of skin surrounding their nostrils gives these bats their name.

Habitat: Summer roosts in old, uninhabited buildings; winter roosts in caves, cellars and mines

Diet: Small insects including midges, moths, craneflies and lacewings

Badger



Description: Distinctive black and white striped face with large grey body.

Habitat: Woods, underground burrows or 'setts'.

Diet: Omnivorous - frogs, small mammals, seeds and berries. Favourite food - juicy worm!

Barn Owl



Description: White heart shaped face and white chest. Long legs, toes and talons

Habitat: Old trees, attics and barns near to field edges, watercourses and grass strips good for hunting.

Diet: Carnivorous - short-tailed vole and other small rodents.

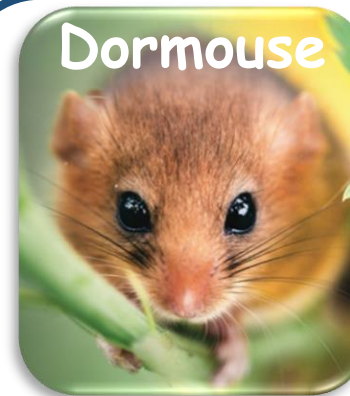
Silurian Moth



Description: A rare and endangered moth found in the Brecon Beacons National Park. Tawny to reddish brown.

Habitat: High moorland areas.
Diet: The caterpillars feed on bilberry plants.

Dormouse



Description: Body length of just 6-9cm, soft golden brown fur, big black eyes and a long feathery tail.

Habitat: Branches in the woodland canopy only descending to ground level to hibernate.

Diet: Omnivorous - nuts, seeds, berries and hawthorn/oak flowers