

# BRECON BEACONS NATIONAL PARK

All £'s 2008 indexed

## 6 Year Summary

Issued 15 October 2009

<b>Analysis by Sector of Expenditure (£'s millions)</b>	<b>2008</b>	<b>2007</b>	<b>2006</b>	<b>2005</b>	<b>2004</b>	<b>2003</b>
Accommodation	19.4	18.5	18.1	17.2	18.4	17.1
Food & Drink	41.3	38.2	37.1	36.2	36.0	33.4
Recreation	13.7	12.7	12.3	12.0	11.9	11.1
Shopping	31.8	29.3	28.4	27.7	27.5	25.5
Transport	30.9	28.3	27.4	26.6	26.5	24.6
Indirect Expenditure	55.8	51.8	50.4	48.5	48.7	45.1
VAT	24.0	22.2	21.6	20.9	21.1	19.5
<b>TOTAL</b>	<b>216.9</b>	<b>201.2</b>	<b>195.3</b>	<b>189.0</b>	<b>190.2</b>	<b>176.4</b>

<b>Revenue by Category of Visitor (£'s millions)</b>	<b>2008</b>	<b>2007</b>	<b>2006</b>	<b>2005</b>	<b>2004</b>	<b>2003</b>
Serviced Accommodation	30.4	30.4	29.7	29.9	32.6	30.7
Non-Serviced Accommodation	85.5	72.5	69.1	61.3	63.7	59.5
SFR	6.0	5.9	6.0	5.9	5.9	5.8
Day Visitors	95.0	92.3	90.5	91.8	88.1	80.4
<b>TOTAL</b>	<b>216.9</b>	<b>201.2</b>	<b>195.3</b>	<b>189.0</b>	<b>190.2</b>	<b>176.4</b>

<b>Tourist Days (Thousands)</b>	<b>2008</b>	<b>2007</b>	<b>2006</b>	<b>2005</b>	<b>2004</b>	<b>2003</b>
Serviced Accommodation	250	251	244	246	268	253
Non-Serviced Accommodation	1,169	983	934	833	864	811
SFR	125	124	124	124	122	121
Day Visitors	3,702	3,605	3,534	3,586	3,438	3,140
<b>TOTAL</b>	<b>5,246</b>	<b>4,963</b>	<b>4,836</b>	<b>4,789</b>	<b>4,692</b>	<b>4,324</b>

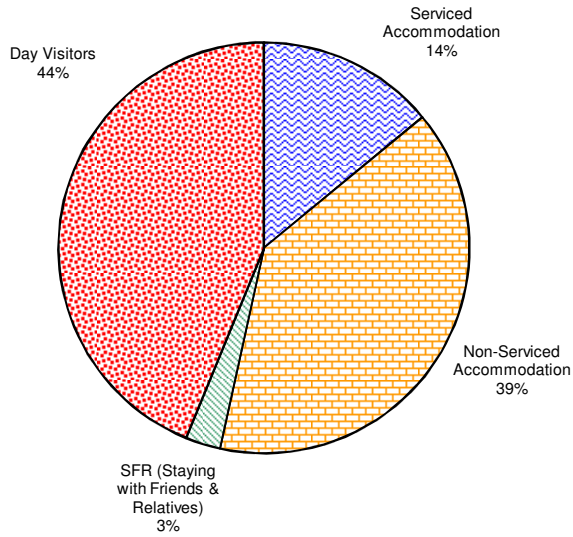
<b>Tourist Numbers (Thousands)</b>	<b>2008</b>	<b>2007</b>	<b>2006</b>	<b>2005</b>	<b>2004</b>	<b>2003</b>
Serviced Accommodation	143	143	150	151	160	139
Non-Serviced Accommodation	175	151	144	126	131	122
SFR	52	52	52	52	51	51
Day Visitors	3,702	3,605	3,534	3,586	3,438	3,140
<b>TOTAL</b>	<b>4,073</b>	<b>3,951</b>	<b>3,880</b>	<b>3,916</b>	<b>3,780</b>	<b>3,451</b>

<b>Sectors in which Employment is supported (FTE's)</b>	<b>2008</b>	<b>2007</b>	<b>2006</b>	<b>2005</b>	<b>2004</b>	<b>2003</b>
<b>Direct Employment</b>						
Accommodation	1,139	1,143	1,129	1,126	1,126	1,126
Food & Drink	965	892	865	844	841	780
Recreation	389	359	348	339	338	313
Shopping	676	624	605	590	586	543
Transport	322	295	286	277	276	256
Total Direct Employment	3,491	3,314	3,233	3,176	3,167	3,018
Indirect Employment	859	798	775	746	750	694
<b>TOTAL</b>	<b>4,349</b>	<b>4,112</b>	<b>4,008</b>	<b>3,922</b>	<b>3,917</b>	<b>3,712</b>

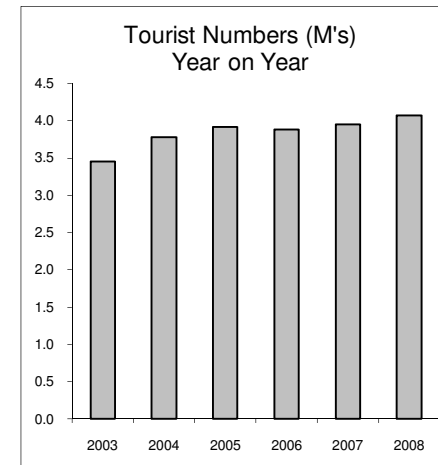
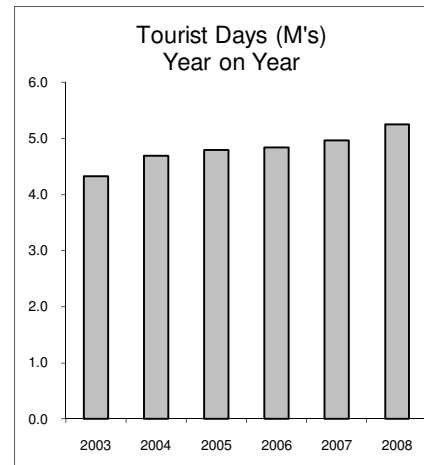
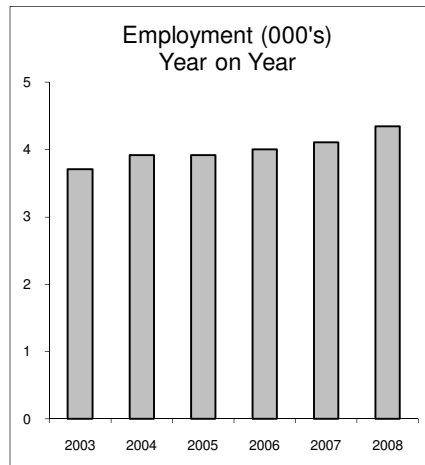
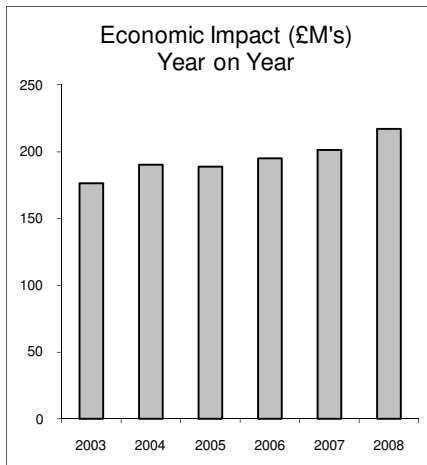
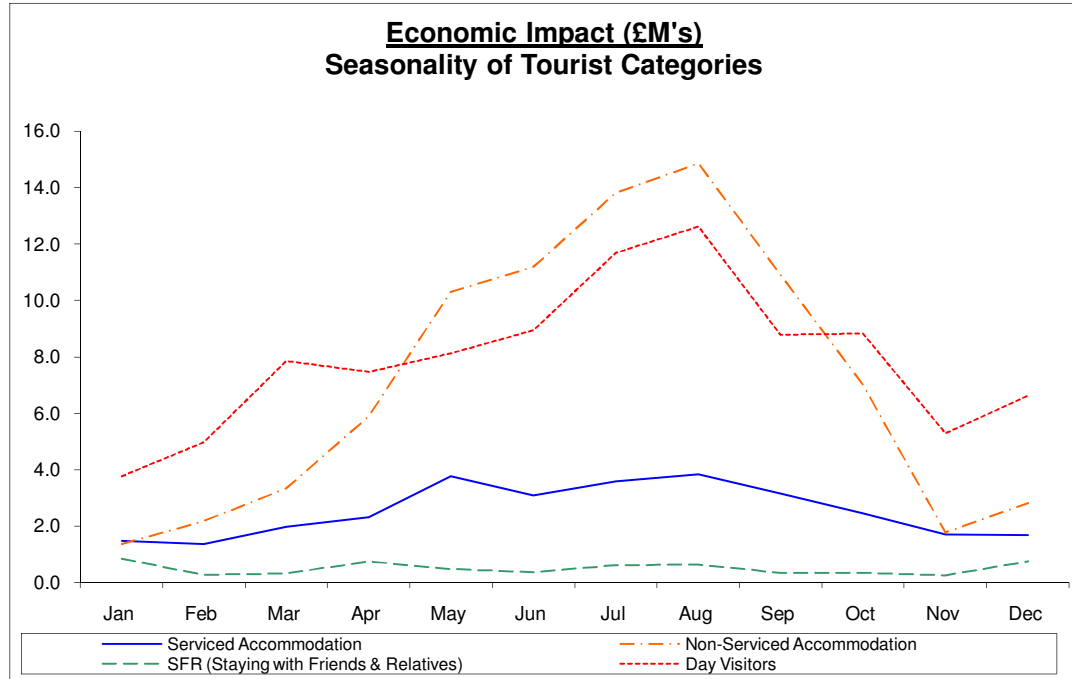
# Brecon Beacons National Park 2008

Indexation to 2008

**Economic Impact**  
Relative Impact of Tourist Categories



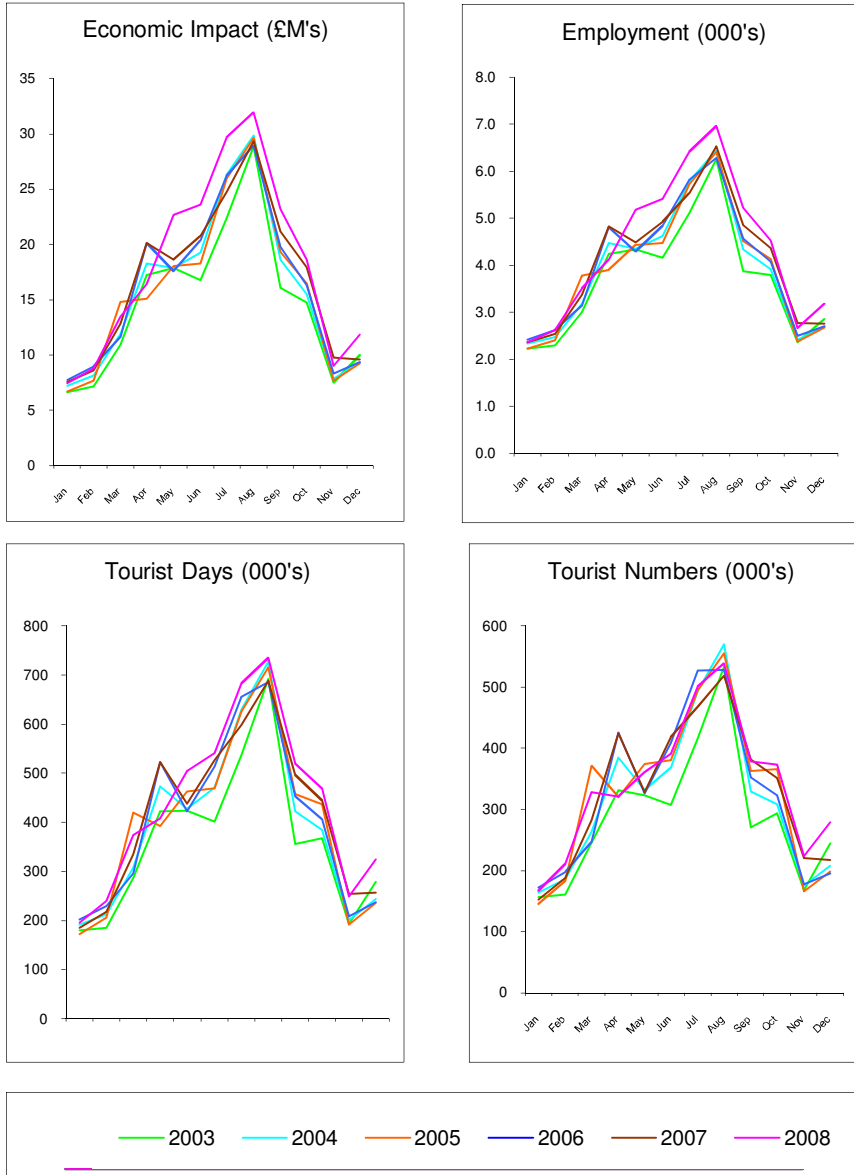
**Economic Impact (£M's)**  
Seasonality of Tourist Categories



# Brecon Beacons National Park 2008

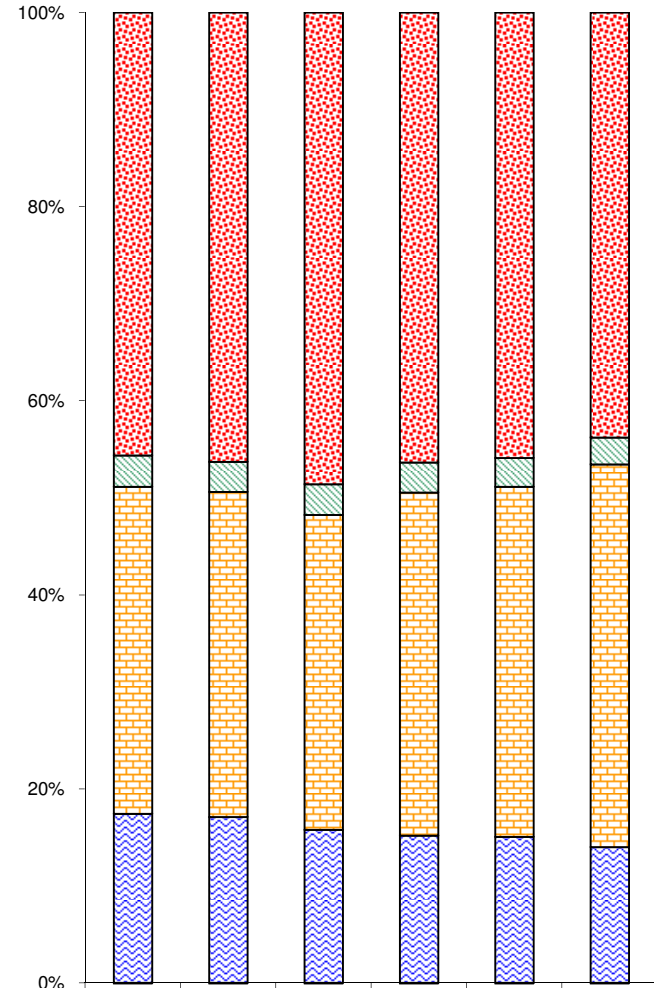
Indexation to 2008

## Seasonality Comparisons of Major Indicators



## Relative Impact Changes

**Economic Impact (£M's)**



	2003	2004	2005	2006	2007	2008
Day Visitors	80,406	88,052	91,841	90,518	92,330	94,977
SFR (Staying with Friends & Relatives)	5,785	5,866	5,930	5,966	5,948	5,998
Non-Serviced Accommodation	59,452	63,681	61,331	69,052	72,533	85,462
Serviced Accommodation	30,709	32,580	29,916	29,727	30,359	30,425